

# Help Contents

[Exit](#)

[Types](#)

[Window Wiz](#)

[Constants](#)

[API Declares](#)

[Shrink Toolbox](#)

[Code Wiz](#)

[Comment Wiz](#)

[Clip Code](#)

[Insert Code](#)

[Indent Wiz](#)

[About Wiz](#)

[Options](#)

Helpfile generated by VB HelpWriter.

# Exit



Clicking the 'Exit' button will close 'The Wiz'. Note that no confirmation will be asked for - if you press the button - 'The Wiz' exits! To restart, simply pull down the 'Add-In' menu and click on the entry titled 'The Wiz' - but why not shrink the toolbox and keep 'The Wiz' on screen?

Helpfile generated by VB HelpWriter.

# Types



What it does

How to

Helpfile generated by VB HelpWriter.

# Window Wiz



What it does

How to

Helpfile generated by VB HelpWriter.

# Constant Wiz - What it does



This feature will allow the programmer to quickly display and search a full list of the 32 bit or 16 bit Public Constants, and automatically insert data directly into the current code module.

## How to

Helpfile generated by VB HelpWriter.

# API Declares



What it does

How to

Helpfile generated by VB HelpWriter.

# Shrink Toolbox



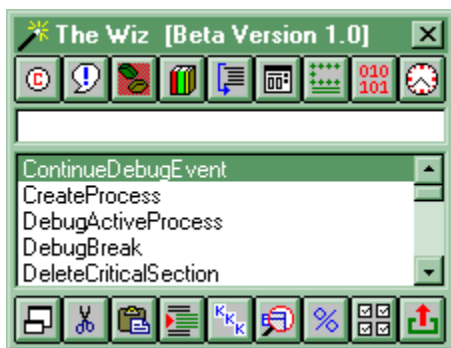
To keep 'The Wiz' on screen but minimised to the size of a button, click on the 'Shrink Toolbox' button. The minimised button will 'stay on top' taking up a minimal amount of space on screen. To reinstate the toolbox to normal size just click on the minimised button.

Helpfile generated by VB HelpWriter.

# API Declares - How To



Clicking on the 'API Wiz' button will cause the toolbox to open and display a listbox containing the 32 bit or 16 bit API Declarations along with a textbox which may be used to search for a particular API Declare. 'The Wiz' will display a message while the listbox loads - there are over 1500 32 bit API Declares so it may take a few seconds. When complete the toolbox looks like this...



As you enter characters in the textbox (the case is ignored) the list will be searched and the matching Declare will be highlighted. The search is very fast, and by the time you have finished typing, the listbox entry will show the matching API Declaration, if one exists.

You may, of course, use the scrollbars to search the box manually.

To insert the declaration in your code, ensure that you have a code module open and place the insertion point where you want the data inserted - then just click on the 'Paste' button.

While the API Wiz is active the button will be shaded - to close the API Wiz simply click on the button again and the toolbox will return to normal size. While the API Wiz is active, other buttons which utilise the 'open' toolbox, such as the Window Wiz, will be disabled. To use those buttons you must first close the API Wiz.

## What it does





# API Declares - What it does



The API Wiz allows the programmer to quickly and easily search a list of all API Declarations, select one and insert the definition directly into the current code module. It is certainly a whole lot easier than using the API Text Viewer which comes with VB4 to cut and paste to and from the clipboard.

The appropriate set (32 bit or 16 bit) will be loaded automatically depending on the version of VB4 which is running.

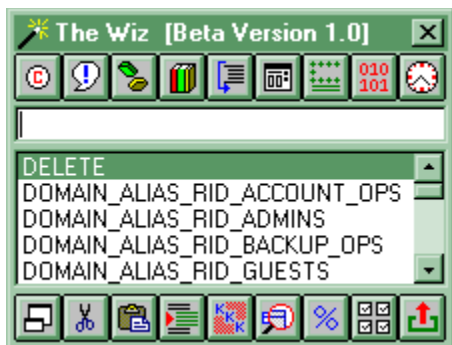
## How to

Helpfile generated by VB HelpWriter.

# Constants - How to



Clicking on the 'Constants' button will cause the toolbox to open and display a listbox containing the 32 bit or 16 bit Public Constants along with a textbox which may be used to search for a particular constant. 'The Wiz' will display a message while the listbox loads as it may take a few seconds. When complete the toolbox looks like this...



As you enter characters in the textbox (the case is ignored) the list will be searched and the matching constant will be highlighted. The search is very fast, and by the time you have finished typing, the listbox entry will show the matching constant definition, if one exists.

You may, of course, use the scrollbars to search the box manually.

To insert the definition in your code, ensure that you have a code module open and place the insertion point where you want the data inserted - then just click on the 'Paste' button.

While the Constant Wiz is active the button will be shaded - to close the Constant Wiz simply click on the button again and the toolbox will return to normal size. While the Constant Wiz is active, other buttons which utilise the 'open' toolbox, such as the API Declares, will be disabled. To use those buttons you must first close the Constant Wiz.

## What it does

# Constants



What it does

How to

Helpfile generated by VB HelpWriter.

# Window Wiz - What It Does

If you've ever used API calls to manipulate windows and got confused over window handles - this is for you. The Window Wiz will allow you to inspect visible windows both within your project and on the Windows desktop, and display the window handle and the window class. The only limitation is that the window being inspected must be visible.

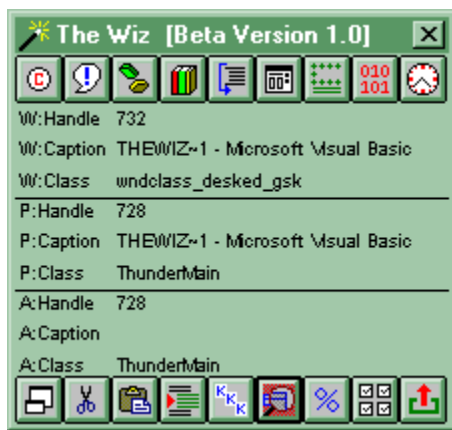
## How to

Helpfile generated by VB HelpWriter.

# Window Wiz - HowTo



Easy! Just click on the 'Window Wiz' button and the toolbox will open to reveal a window with three sections. Each of the sections refers to the selected window, the selected window's parent window and the selected window's original parent ie the ancestor window. Opened up, the toolbox looks like this...



Within each section data is displayed showing the window caption, the window handle and the window class. To display data for a specific window, simply move the cursor over the selected window. In order to let the Window Wiz gather and display data the window must be visible.

While the Window Wiz is active the button will be shaded - to close Window Wiz simply click on the button again and the toolbox will return to normal size. While the Window Wiz is active, other buttons which utilise the 'open' toolbox, such as the API Declares, will be disabled. To use those buttons you must first close the Window Wiz.

## What it does

# Types Wiz - What It Does



This feature will allow the programmer to quickly display and search a full list of the 32 bit or 16 bit Type Definitions, and automatically insert data directly into the current code module.

## How to

Helpfile generated by VB HelpWriter.

# Types - How To



Clicking on the 'Types' button will cause the toolbox to open and display a listbox containing the 32 bit or 16 bit Type Definitions along with a textbox which may be used to search for a particular type. 'The Wiz' will display a message while the listbox loads as it may take a few seconds. When complete the toolbox looks like this...



As you enter characters in the textbox (the case is ignored) the list will be searched and the matching type will be highlighted. The search is very fast, and by the time you have finished typing, the listbox entry will show the matching type definition, if one exists.

You may, of course, use the scrollbars to search the box manually.

To insert the definition in your code, ensure that you have a code module open and place the insertion point where you want the data inserted - then just click on the 'Paste' button.

While the Types Wiz is active the button will be shaded - to close Types Wiz simply click on the button again and the toolbox will return to normal size. While the Types Wiz is active, other buttons which utilise the 'open' toolbox, such as the API Declares, will be disabled. To use those buttons you must first close the Types Wiz.

## What it does.



# Code Wiz



What It Does

How to

Helpfile generated by VB HelpWriter.

# Comment Wiz



What it does

How to

Helpfile generated by VB HelpWriter.

# Comment Wiz - What It Does



The Comment Wiz will, in essence, toggle commented lines. That is, if a line is uncommented, the Comment Wiz will insert a comment marker, and vice versa. Comment Wiz will ignore lines which begin with REM.

## How to

Helpfile generated by VB HelpWriter.

# Comment Wiz - How to



With a code window open all you do is click and drag to select the portion of text which you want commented, uncommented or toggled. Click the button and it's all done for you!

Do be careful when selecting text for treatment - 'The Wiz' will reverse the comment state of all line you feed him. The interface could have included buttons for each function but in the interests of making 'The Wiz' visually small and compact, they have been combined.

## What it does

Helpfile generated by VB HelpWriter.

# Code Wiz - What It Does



The Code Wiz allows the programmer to cut portions of code from existing projects and store them for reuse in other projects. Alternatively, if you see a tip in 'Visual Basic Programmers Journal' or elsewhere, fire up VB, type in or load the tip and save it in 'The Wiz' so its always easily to hand when you need it.

## How to

Helpfile generated by VB HelpWriter.

# Code Wiz - How to



## Clip Code

### Step 1.

To clip code, simply open the toolbox to display the Code Window, click and drag across the text to clip, and press the 'Clip' button.

### Step 2.

'The Wiz' will prompt you for a description for your clipped code. Enter the description and click on 'OK' - that's it - all done!

## Insert Code

### Step 1.

To insert code, open the toolbox to display the Code Window,.

### Step 2.

Select an item in the listbox either by typing the description in the search textbox or by use the scrollbars to scroll through the listbox.

### Step 3.

Place the insertion point in an open code window where you want the code snippet inserted and click the 'Paste' button. 'The Wiz' will prompt you with a reminder that you are just about to insert data into the current window - click 'OK' to accept.

## What it does

## Code Window



# Clip Code



Use this function to clip a code snippet from your code and store it in the Code Library using the [Code Wiz](#).

Helpfile generated by VB HelpWriter.



# Insert



Use this function to insert selected API Declarations, code snippets, types or constants into the current code window at the insertion point.

Helpfile generated by VB HelpWriter.

# Indent Wiz



This topic has not yet been completed. The Indent Wiz is not functional in the beta version.

Helpfile generated by VB HelpWriter.

# About Wiz



What it does

How to

Helpfile generated by VB HelpWriter.

# Options



Clicking on the 'Options' button will bring up a screen allowing the user to specify several startup options - the 'home position' of 'The Wiz', the position of 'The Wiz' in minimised 'button mode', the default programmer name to be used with the Standard Comment Header Wiz and whether or not the warnings prior to code insertion are enabled or not.

Helpfile generated by VB HelpWriter.

# About Wiz - What It Does



The About Wiz allows the programmer to quickly and easily insert a complete About Form right into the current project. All that has to be done is to edit the new form to change the captions and colors.

*The Demo version allows the use of one template, the registered version comes with three ready made About Forms.*

## How to

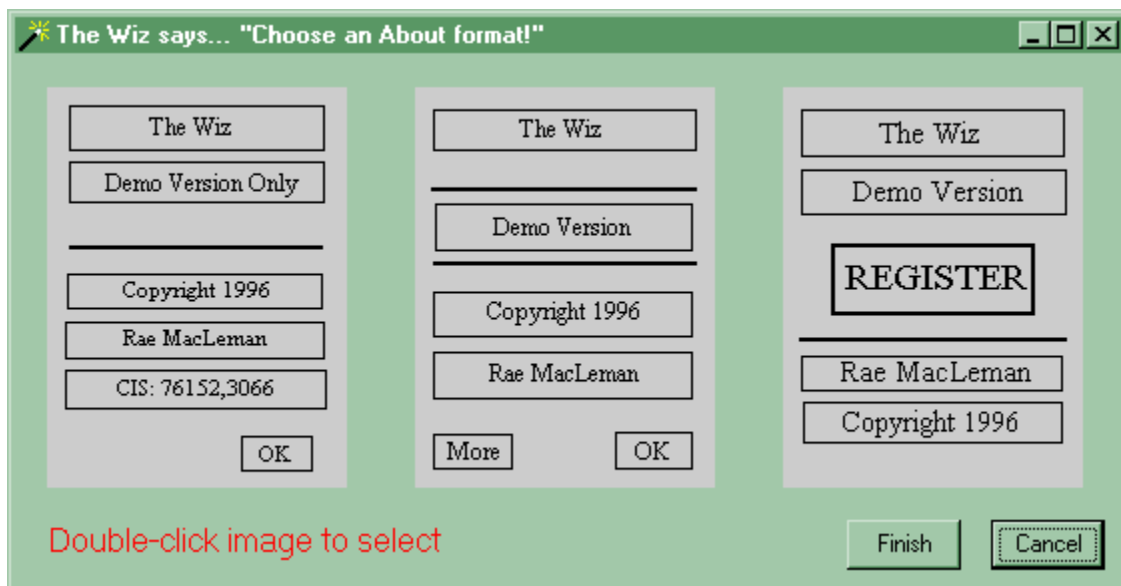
Helpfile generated by VB HelpWriter.

# About Wiz - How to



## Step 1.

Ensure you have a project open. Click the About Wiz button - a selection screen will appear...



## Step 2.

Double-click on the required layout - a black frame will appear around the selected layout. Only the first layout is available with the Demo version.

## Step 3.

Click on 'Finish' and the form will be inserted into the current project. All you need to do now is edit the form in the normal way to change the title, color etc.

## What it does

Helpfile generated by VB HelpWriter.



